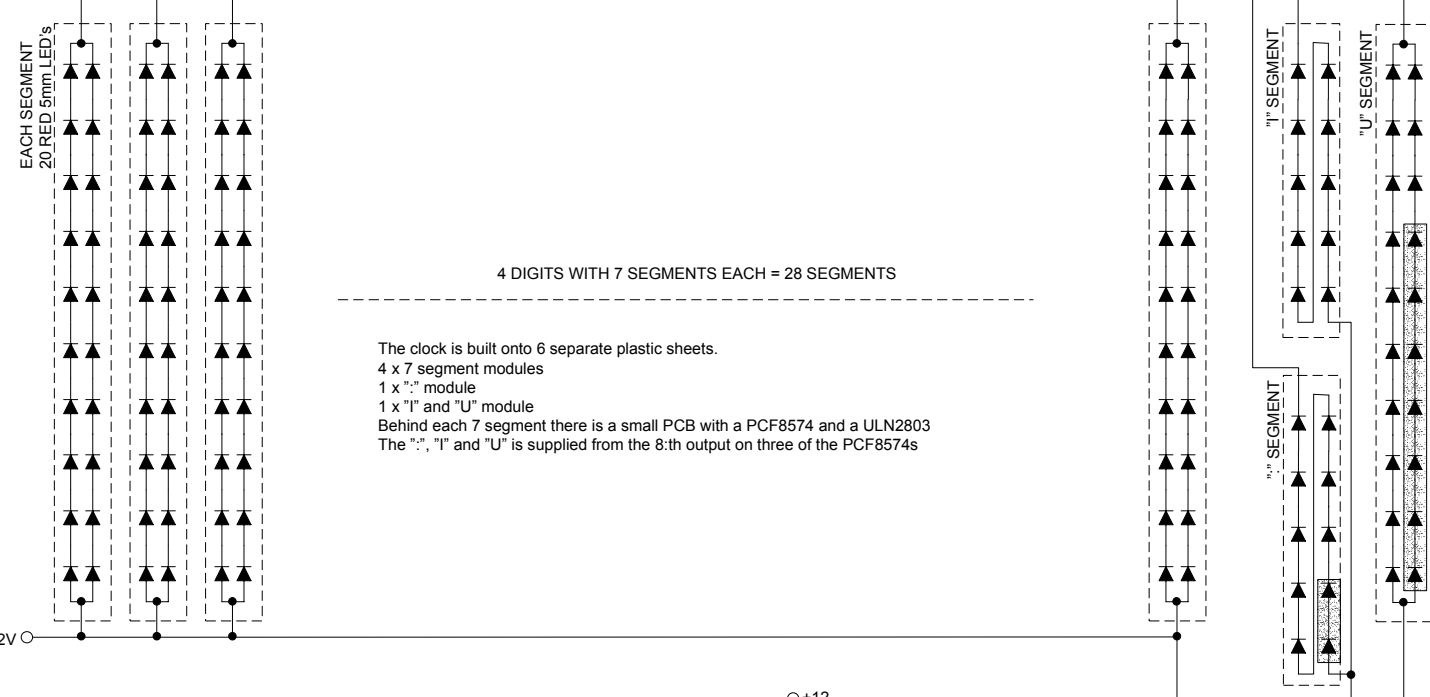
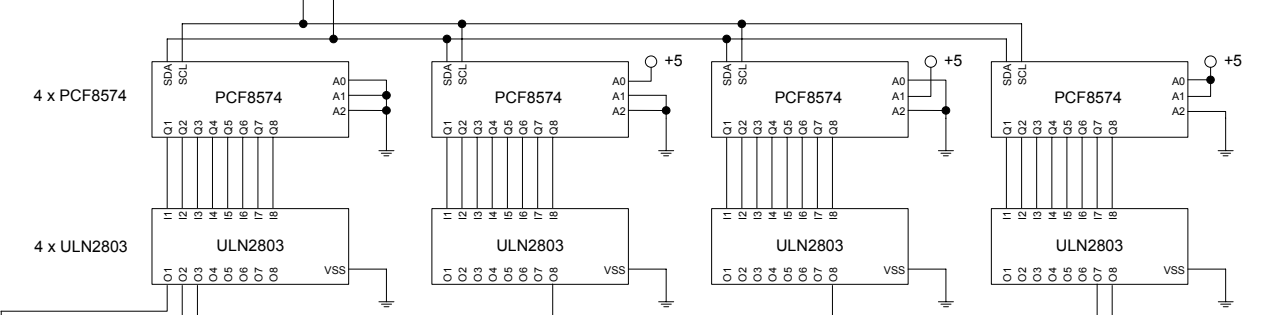
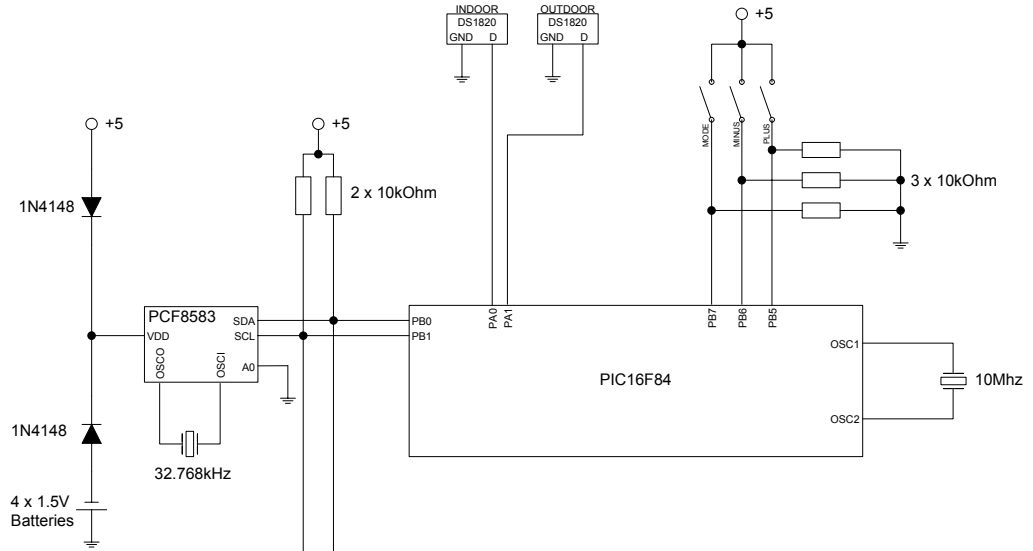
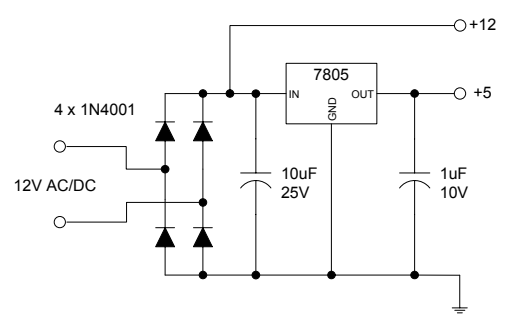


TEMPERATURE SENSORS



4 DIGITS WITH 7 SEGMENTS EACH = 28 SEGMENTS

The clock is built onto 6 separate plastic sheets.  
 4 x 7 segment modules  
 1 x ":" module  
 1 x "I" and "U" module  
 Behind each 7 segment there is a small PCB with a PCF8574 and a ULN2803  
 The ":", "I" and "U" is supplied from the 8:th output on three of the PCF8574s



Shaded leds are dummies just to get even light strength. Hidden behind the clock.